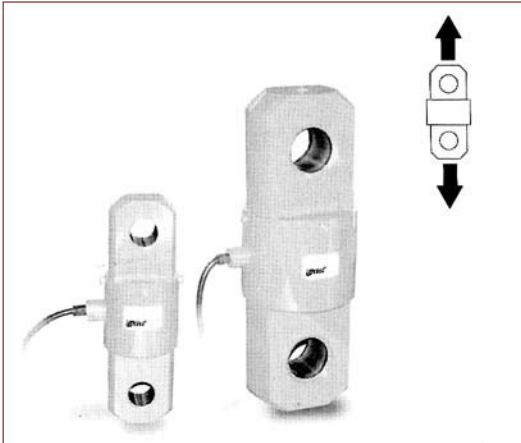


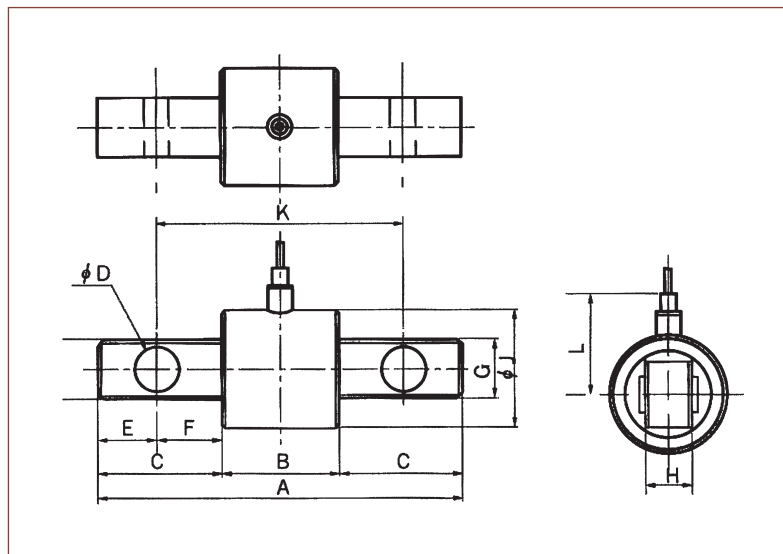
TENSION LOAD CELL

Model TS21



Crane weighing, Tower Testing

Tension Load Cell



Specifications

Specifications	Accuracy
Rated capacity (R.C)	10tf,20tf,30tf,50tf,70tf
Rated output (R.O)	1mv/v \pm 0.5%
Nonlinearity	0.05% of R.O.
Repeatability	0.01% of R.O.
Zero balance	0.02% of R.O.
Terminal resistance input	350 \pm 50 Ω
Terminal resistance output	350 \pm 5 Ω
Insulation resistance bridge / case	2000M Ω
Compensated temperature range	-10~50 $^{\circ}$ C
Temperature effect, on rated output	0.1% of LOAD/10 $^{\circ}$ C
Temperature effect, on zero balance	0.05% of R.O./10 $^{\circ}$ C
Excitation recommended	10V
Safe overload	150% R.C
Cable length	ϕ 7, 4core, 3m

Dimensions Table

Unit : mm

Capacity	A	B	C	ϕD	E	F	G	H	ϕJ	K	L
10tf	310	100	105	37	50	55	90	40	100	210	53
20tf	400	120	140	62	70	70	120	70	135	285	100
30tf	428	128	150	64	70	80	120	75	135	288	100
50tf	508	148	180	75	83	97	145	98	160	342	190
70tf	620	180	220	102	120	100	150	125	210	280	152

