

DATALOGGERS

List of Models



HT-HR



Tc-HR



mV-HR

Model	Description
pH-HR	pH and Temperature For use with a Pt100 temperature compensated pH probe (not included)
GP-HR GP-MC mA1-PS mA3-PS mA3-PS+P 5VD2-10VD1-PS mA1-5VD1-Pt1-PS Pt3-PS Flow-mA2-PS ACM-mA2-PS	4 Input General Purpose Logger 3 Analogue inputs - individually configurable 1 Digital pulse input channel 10 Input General Purpose Logger 8 Analogue inputs - individually configurable 2 Digital pulse input channel Option: IP66 Weatherproof enclosure Standard External Sensors & Plug Sets for GP-HR One 4~20mA or 0~20mA input Three 4~20mA or 0~20mA inputs Three 4~20mA or 0~20mA inputs c/w pulse Two 0~5V input plus one 0~10V inputs One 4~20mA plus one 0~5V plus one Pt 1000 temp probe Three Pt1000 temp probes Coil or open collector plus two 4~20mA inputs Flow metering off the pump run contact plus two 4~20mA inputs
Notes:	Pt1000 temperature probes -50~130°C (Logger maximum range is -100~400°C) Thermistor temperature probes -30~70°C
OmniLog	OmniLog Software and DLC3 download cable Spare DLC3 download cable

Safe T Logger



- Dual channel logger
- Channel 1 - Internal temperature sensor, (-20 - 70°C)
- Channel 2 - External input for;
Temperature & Humidity - Pressure Light - Wind direction - Voltage Current - Leaf wetness.
The above sensors are available from Intech.
- Alarms - Two independent alarms with LED status
- Three start modes: Start immediately,
Start on predetermined date/time,
Start manually in the field.
- Three stop modes: Stop when memory is full,
Stop on predetermined date/time,
Continues logging (deleting old data).
- Logging modes:
 - Each channel can be set to log all or any of the following;
Instantaneous readings, Average reading, Maximum reading, Minimum reading.
- Continually connected to the computer for instant readings.
- Interrogation over phone lines using a standard modem link.
 - Dial a pocket pager on an alarm condition.

MircoToT Logger



- Small size
- 7584 readings
- Single internal temperature logger
- Wide temperature range -20 ~70°C
- Accuracy of ±0.38°C (0°C to 30°C)
- Start modes; on date/time or immediately.
 - Logging modes: Each channel can be set to log all or any of the following;
Instantaneous readings, Average reading, Maximum reading, Minimum reading.
- Continually connected to the computer for instant readings.
 - Interrogation over phone lines using a standard modem link.
 - Dial a pocket pager on an alarm condition.

HR Series Loggers

- Stainless steel case. 1P66 rating.
- Up to 1,000,000 readings can be stored. 5 year battery life.
- Sampling rate from 1 sec to 10 hrs in 1 second increments.
- Each channel can be set to log all or any of the following;
 1. Instantaneous readings.
 2. Average reading.
 3. Maximum reading.
 4. Minimum reading.
- Start modes:
 1. On date / time.
 2. Immediately.
 3. On input condition.
- Stop modes:
 1. On date / time.
 2. When memory is full.
 3. Loop around. (continues logging).
- Continually connected to the computer for instant readings.
- Interrogation over phone lines using a standard modem link.
- Dial a pocket pager on an alarm condition.

GP-HR General Purpose 4 Channel Loggers



Select any, up to four of the following channels:

- Three analogue input channels, to log any combination of;

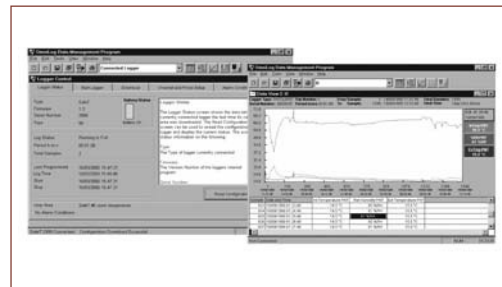
- | | | |
|--------------------|-------------|-------------|
| 1. Temperature | 2. Humidity | 3. Pressure |
| 4. Light | 5. Voltage | 6. Current |
| 7. Wind direction. | | |

- One digital pulse input channel, to log;

- | | | |
|--------------------------|-----------------------------|----------|
| 1. Rainfall | 2. Wind speed | 3. Flow. |
| 4. Counter (up to 65535) | 5. Frequency (up to 60 kHz) | |

- Internal temperature sensor channel may be activated to log the ambient temperature of the logger.

TruTrack OmniLog Software



- The TruTrack Omnilog Data Management software is an application for reading, displaying, analysing, organizing and exporting data that has been down loaded from TruTrack data loggers.
- Data can be read from data loggers or retrieved from previously saved data files.
- A connected data logger can be configured, calibrated, started, read and stopped by this application.
- Data retrieved from data loggers and previously saved data files can be viewed and printed in a values spread sheet list, as a graph or as a statistics report. These values, graphs and statistics can be displayed and printed for all data or from a user selected block of data.
- Data can also be exported in a large range of industry standard formats so as to be used by other applications.

- | | | |
|------------------|--------------------------|--------------------------------------|
| - Battery Status | - Graph & Values | - Modem Control |
| - Pager | - Exporting Datasets | - Offset Calibration |
| - Pager Alarm | - Graph Colors | - Sample Period |
| - Graph | - Joining Graphs | - Channel & Probe Setup |
| - Reports | - Light Energy | - Change Dataset units |
| - Formats | - Pulse Input | - High Precision Graph Draw |
| - Print | - Leaf Wetness | - Quick Graph Draw |
| - Overviews | - Probe Selection | - Typographical Conventions |
| - Dew Point | - Saving Log Files | - Calibration Procedures |
| - Trips | - Serial Number | - Humidity Calibration |
| - Tutorial | - Dataset History | - Light Intensity Calibration limits |
| - Log File | - Wind Chill Factor | - Units & Scaling |
| - Log Status | - Real Time Screen | - Displaying Real Time readings |
| - Multi channel | - Viewing Data in values | |



DATALOGGERS

Temperature Data Loggers with Display



The Tc-LCD is a handheld two channel high resolution (16 bit) temperature datalogger with a liquid crystal display.

The logger connects to an external thermocouple probe and also has an internal temperature sensor. The logger accepts Type J, K, N, R and T thermocouple probes. The display shows ambient temperature, thermocouple temperature, battery voltage, logger and alarm status. Storage capacity of up to 64,000 samples.

This logger is designed for indoor use (IP 40) but can be supplied with a TruTrack Seahorse Logger Enclosure for outdoor use. The Tc-LCD uses the standard NIST (National Institute of Standards and Technology) equations to calculate, display and log temperatures from the various thermocouple probe types.

Features:

- Temperature can be set to any combination of Point, Average, Maximum & Minimum readings.
- Universal miniature thermocouple connector socket.
- Accepts Type J, K, N, R and T thermocouple probes.
- 64,000 8 bit samples; 32,000 16 bit samples.
- Optional TruTrack Seahorse Logger Enclosure available for outdoor use.
- Thermocouple probes available, please see below.
- A DLC8 download cable is required to connect the Tc-LCD to a computer.

Model	Description
TC-LCD	Handheld two channel high resolution (16 bit) temperature datalogger with liquid crystal display Accuracy: $\pm 0.05\%$ Resolution: 0.1°C Dimensions: 130mm x 80mm x 30mm Weight: 185g Accepts Type J, K, N, R and T thermocouple probes
Options:	
TruTrack Seahorse Logger Enclosure	Weatherproof lockable equipment housing for Tc-LCD outdoor use
HHT-03	Type K temperature probe for Tc-LCD Spear probe 2m pvc cable with handle & mini plug Others available, please contact Intech
OmniLog	OmniLog Software and MC8 download cable Spare MC8 download cable