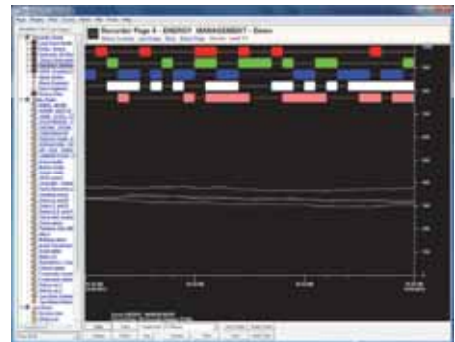


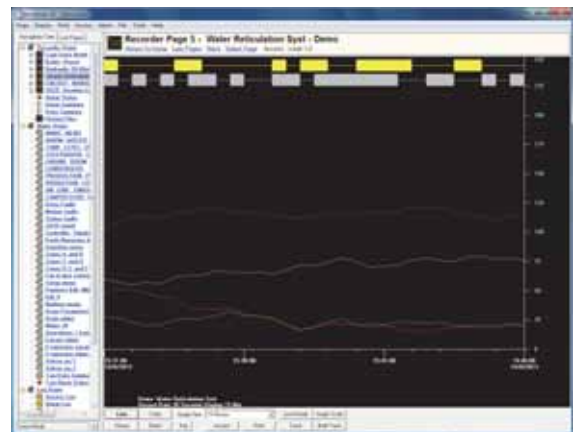
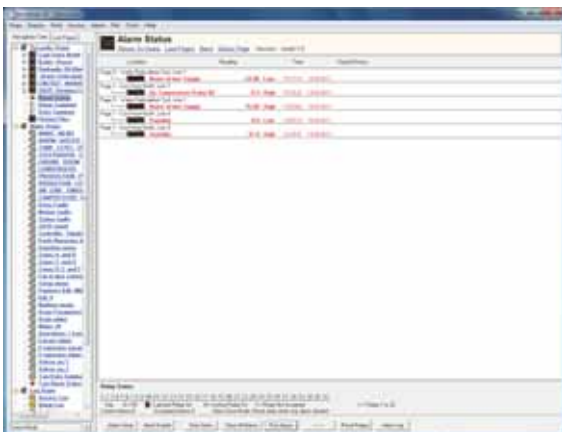
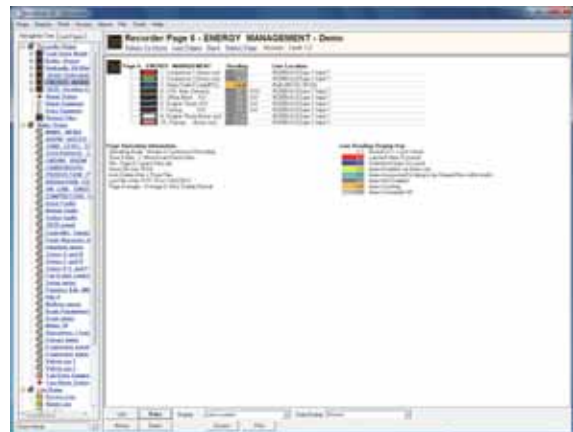
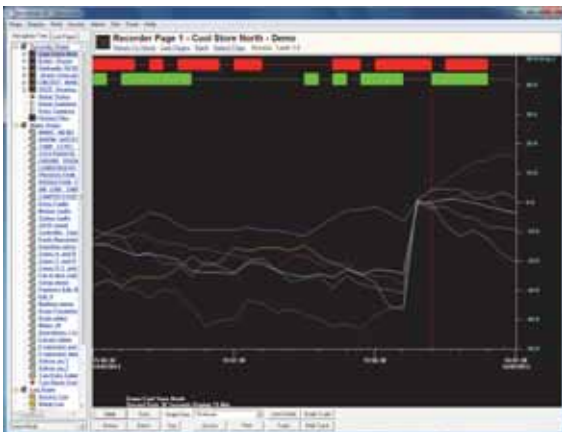
DATA LOGGING AND SCADA SOFTWARE

Recorder Module

- Real-time line graphs.
- Real-time data screens.
- Data analysis.
- Batch recording.
- Continuous recording.
- Mathematical blocks e.g.
 - subtraction.
 - multiply.
 - Sq root.
 - min/max.
 - addition.
 - divide.
 - average.
 - nat. log.
- Totalising in engineering units.
- Total hours run facility.
- Data logs to printer.
- ISO 9000 support.
- Data storage to disk.
- Help screens.
- Historical retrieval.
- Historical search.
- History replay.
- Function key support.
- Alarm handling and printing.
- Event handling and printing.
- Comment entry by operators.
- Report generator.
- User log-on and audit.
- DDE support.
- Communicates with:
 - Intech field stations.
 - Most PLC's.
- Multi-level passwords.
- Excel support.
- Cost effective field interface hardware.



- MicroScan is a complete Windows® based SCADA software product, meeting the demands of industrial, commercial, laboratory and research environments.
- Start off small with the world's best 'Recorder Module' for QA, mandatory data collections, plus plant wide monitoring, or jump straight into a full system with Recorder and Mimic (MM1) modules.
- Add the powerful 'Network Module' to share the data with managers, accountants, engineers, and others.



www.intech.co.nz/microscan